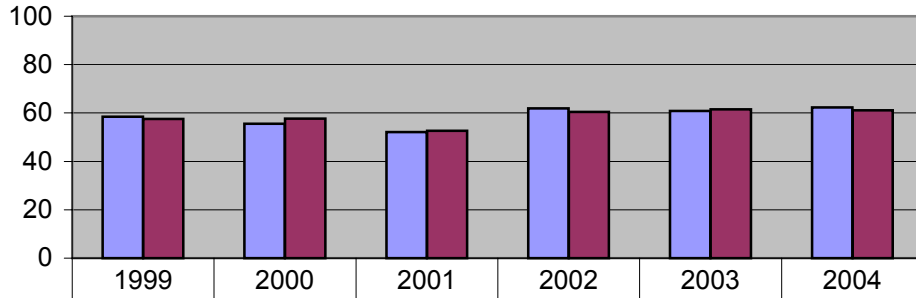


**Middle Level Mathematics Assessment
6 Year Data of Percent Successful**

	1999	2000	2001	2002	2003	2004
Dorchester	66.7	46.7	55	20	81.8	50
Marshview Middle	73.2	57.3	51.5	72.3	59.5	73.1
Port Elgin Reg	44.7	21.4	46.2	70.6	87.9	83.3
Beaverbrook	26.5	20.6	36	48.7	27.5	51.6
Bessborough	75.6	61.7	69.8	82.4	75	70.7
Birchmount	43.9	73.5	63.5	62.7	51.9	54.1
Hillcrest	42.6	44.4	16.7	42.5	41.1	58.1
Magnetic Hill	66.7	68	55.8	61.4	75.5	53.1
Queen Elizabeth	76.7	68.9	63.4	61.1	74.1	70.7
Riverview Middle	52.8	47.7	57.9	58.7	62.2	57.9
Shediac Cape	36.8	57.1	31.3	60.9	65.2	33.3
Sunny Brae	50.7	50.8	43.5	59.1	66.2	46.8
Lewisville Middle	78.6	70.2	66.3	67	67.6	65.9
Edith Cavell	29.7	36	9.7	33.3	40.7	66.7
Lou MacNarin	29.4	50	51.4	55.8	62.5	63.6
Evergreen Park	79	68.5	61.4	81.6	69	90.9
Havelock Middle		25	44.4	88.9	68.8	70
Petitcodiac Reg		50.7	47.9	58.7	56.7	45.5
JMA/Salisbury		58.8	44.2	49.3	38.2	64.6
Caledonia		56.4	55.6	58.2	62.2	55.1
Riverside Cons		66.7	40	100	100	57.1

	1999	2000	2001	2002	2003	2004
District Mean	58.5	55.5	52.1	61.9	60.9	62.3
Provincial Mean	57.6	57.7	52.6	60.4	61.5	61.1

**Middle Level Mathematics Assessment
District and Provincial Comparison of Percent Successful**



■ District Mean	58.5	55.5	52.1	61.9	60.9	62.3
■ Provincial Mean	57.6	57.7	52.6	60.4	61.5	61.1